



## Distillation unit model DW

Treatment of contaminated solvents, concentration of rest-inks, recovery of clean solvent and reduction of waste to be disposed. Cylindrical distillation boiler that features an electrically heated double jacket filled with thermal oil. Designed for batch operation and continuous. Residue discharge conveniently through the open flap at the front of the unit or through open lid with plastic discharge bag hooked in before distillation starts. Distillation under vacuum to lower boiling point and heating temperature. Automatic shut-off when reaching desired densification. Various options to meet respective task, Ex-proof category 1/2 according to ATEX.

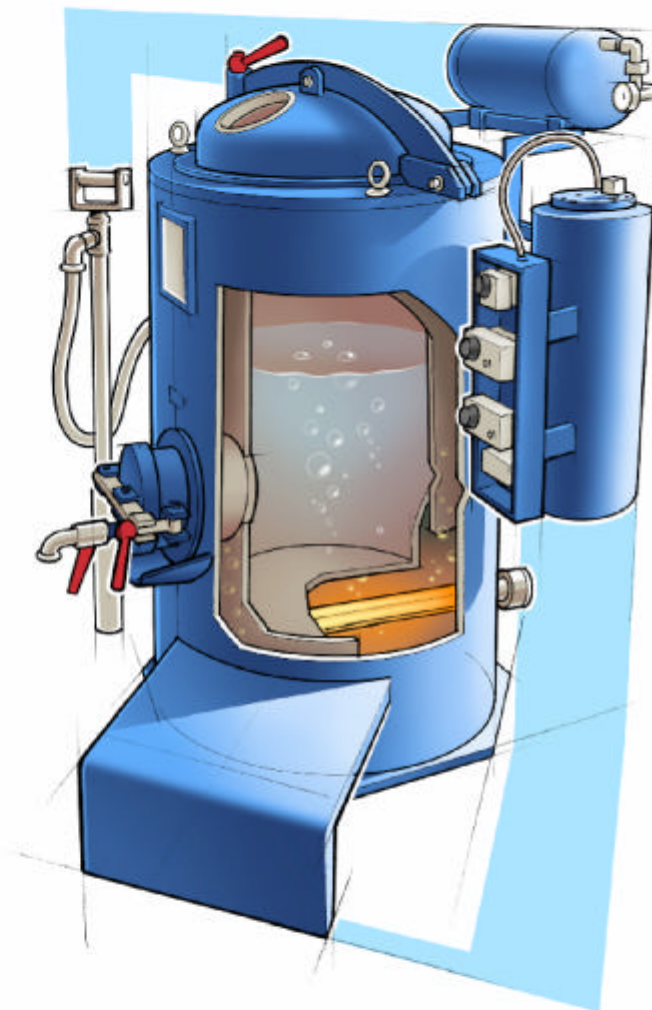
distillation output\*:

model DW 50

» 20-40 l/h

model DW100

» 30-60 l/h



media to be distilled



\* (recovery rate varies depending upon type of solvent and solvent contamination.)